



Unit 5 & 6 Cherry Orchard Lane, Salisbury, Wiltshire, SP2 7JG

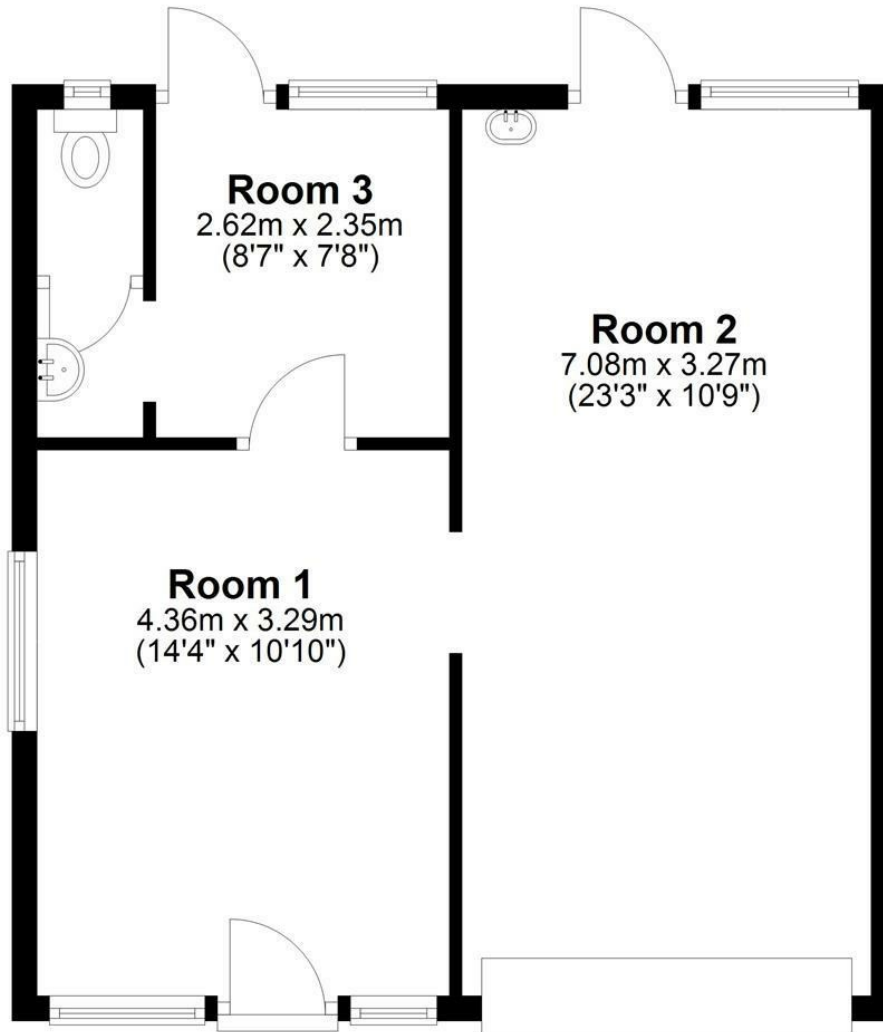
Guide Price £50,000 Freehold


**Rare opportunity to purchase 2 lock up units/garages situated in a residential area on the western side of the city offering a variety if usages.**

**Description**

A rarely available opportunity to purchase a property which can be used for a variety of purposes, situated in a residential area on the western side of the city. There are three separate rooms, one with a large rolling garage door, windows to three sides, two doors to the rear outside space, further pedestrian door to front, cloakroom connected to mains drains, 2 wash basins and electric water heaters. There is a small area of outside space to the rear.

## Ground Floor



Energy Efficiency Rating		
	Current	Potential
Very energy efficient - lower running costs		
(92 plus) <b>A</b>		
(81-91) <b>B</b>		
(69-80) <b>C</b>		
(55-68) <b>D</b>		
(39-54) <b>E</b>		
(21-38) <b>F</b>		
(1-20) <b>G</b>		
Not energy efficient - higher running costs		
<b>England &amp; Wales</b> EU Directive 2002/91/EC 		

**WHITES**  
 Castle Chambers, 47 Castle Street,  
 Salisbury, Wiltshire, SP1 3SP  
 01722 336422  
[www.hwwhite.co.uk](http://www.hwwhite.co.uk)  
[residential-sales@hwwhite.co.uk](mailto:residential-sales@hwwhite.co.uk)

